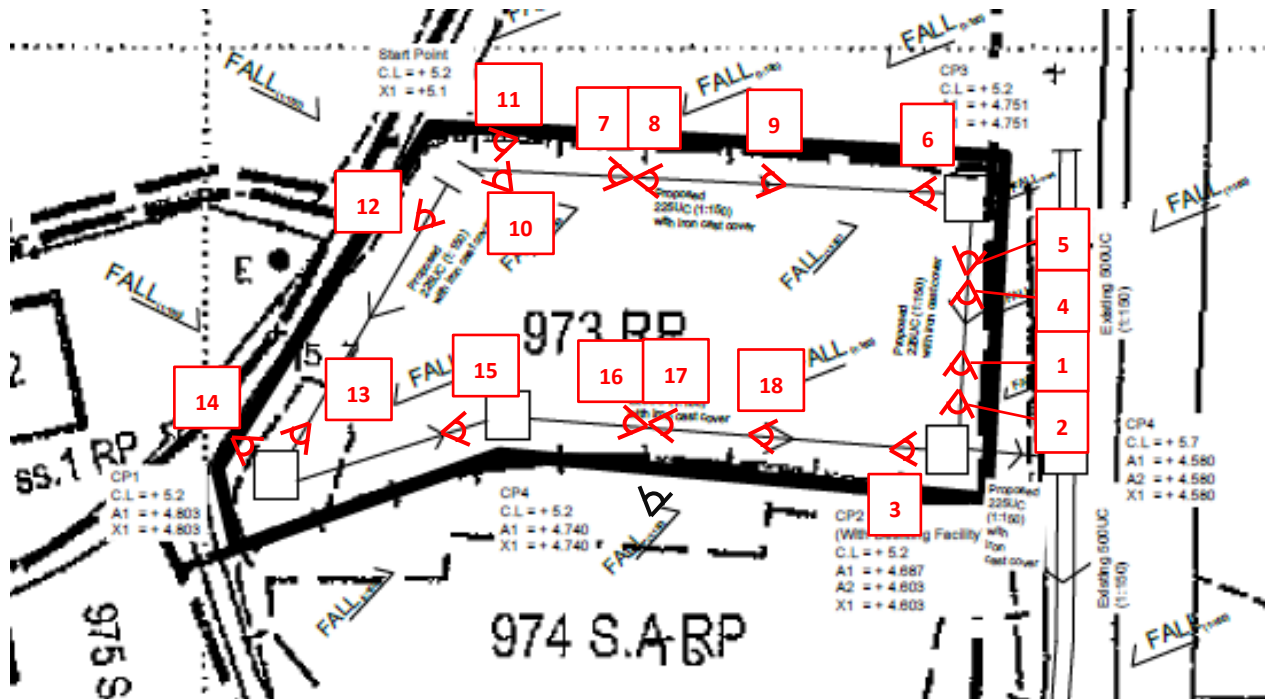


## **Appendix I**

### Condition Record of Existing Drainage Facilities on the Site

**Temporary Warehouse (Excluding Dangerous Goods Godown)  
and Associated Filling of Land for a Period of 3 Years in "Agriculture" Zone,  
Lot 973 RP (Part) in D.D. 107, Fung Kat Heung, Kam Tin, Yuen Long, New Territories**

**Existing Drainage Facilities at the Site**



1



2





3



4





5



6





7



8





9



10





11



12





13



14





15



16





17



18



## **Appendix II**

### **Fire Service Installations Proposal**



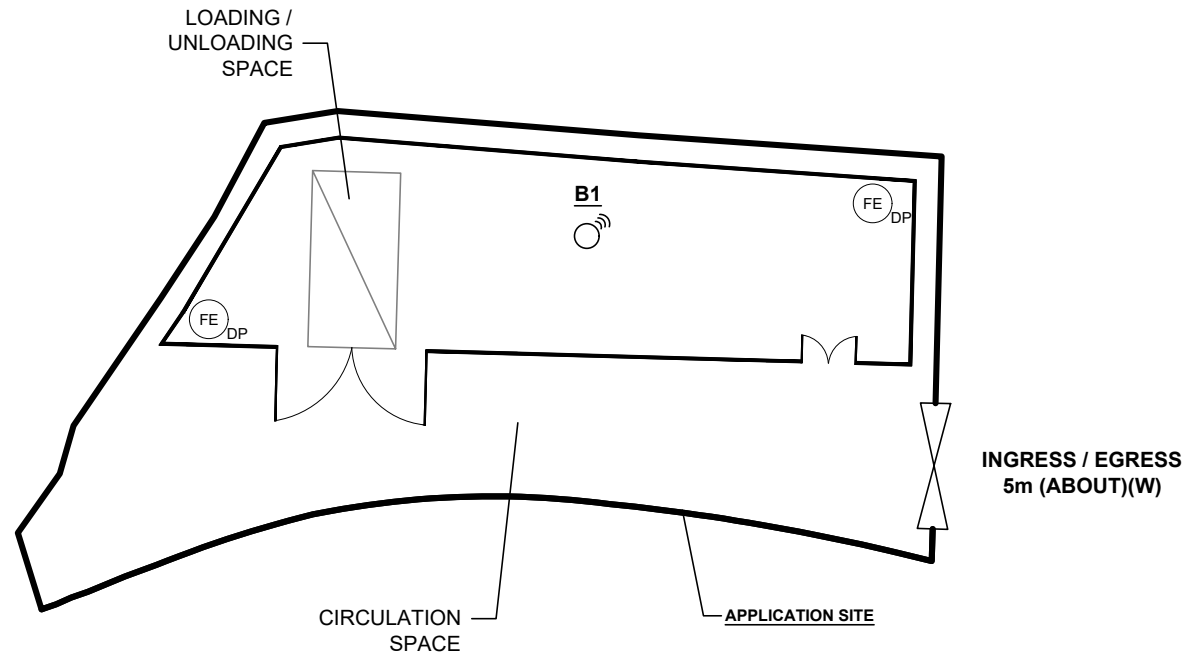
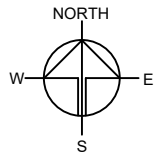
# DEVELOPMENT PARAMETERS

APPLICATION SITE AREA	: 502 m <sup>2</sup>	(ABOUT)
COVERED AREA	: 220 m <sup>2</sup>	(ABOUT)
UNCOVERED AREA	: 282 m <sup>2</sup>	(ABOUT)
PLOT RATIO	: 0.44	(ABOUT)
SITE COVERAGE	: 44 %	(ABOUT)
NO. OF STRUCTURE	: 1	
DOMESTIC GFA	: NOT APPLICABLE	
NON-DOMESTIC GFA	: 220 m <sup>2</sup>	(ABOUT)
TOTAL GFA	: 220 m <sup>2</sup>	(ABOUT)
BUILDING HEIGHT	: 8.23 m	(ABOUT)
NO. OF STOREY	: 1	


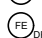
# LOADING/UNLOADING PROVISION

NO. OF LIGHT GOODS	: 1
VEHICLE PARKING SPACE	: 1
DIMENSION OF	
LOADING/UNLOADING SPACE	: 7m (L) X 3.5m (W)

STRUCTURE	USE	COVERED AREA	GFA	BUILDING HEIGHT
B1	WAREHOUSE AND COVERED L/UL AREA	220 m <sup>2</sup> (ABOUT)	220 m <sup>2</sup> (ABOUT)	8.23 m (ABOUT)(1-STOREY)
TOTAL		220 m <sup>2</sup> (ABOUT)	220 m <sup>2</sup> (ABOUT)	






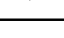
# FIRE SERVICE INSTALLATIONS

-  STAND-ALONE FIRE DETECTOR
-  4 KG DRY POWDER TYPE FIRE EXTINGUISHER

# FS NOTES:

- 1) SUFFICIENT STAND-ALONE FIRE DETECTOR SHALL BE PROVIDED THROUGHOUT THE ENTIRE BUILDING IN ACCORDANCE WITH "STAND-ALONE FIRE DETECTOR GENERAL GUIDELINES ON PURCHASE, INSTALLATION & MAINTENANCE [SEP 2021]".
- 2) IN RELATION TO 1) ABOVE, WHERE TWO OR MORE STAND-ALONE FIRE DETECTORS ARE INSTALLED IN AN ENCLOSED STRUCTURE, ALL STAND-ALONE DETECTORS SHALL BE INTERCONNECTED (EITHER WIRED OR WIRELESSLY) SUCH THAT WHEN ONE OF THE STAND-ALONE FIRE DETECTOR IS TRIGGERED, ALL CONNECTED STAND-ALONE FIRE DETECTORS SHALL SOUND AN ALARM SIMULTANEOUSLY.
- 3) PORTABLE HAND-OPERATED APPROVED APPLIANCE SHALL BE PROVIDED AS REQUIRED BY OCCUPANCY.
- 4) ACCESS IS PROVIDED FOR EMERGENCY VEHICLE TO REACH 30m OF ALL PART OF STRUCTURES.

# LEGEND

-  APPLICATION SITE
-  STRUCTURE
-  LOADING / UNLOADING SPACE
-  INGRESS / EGRESS

PLANNING CONSULTANT



PROJECT

TEMPORARY WAREHOUSE (EXCLUDING DANGEROUS GOODS GODOWN) AND ASSOCIATED FILLING OF LAND FOR A PERIOD OF 3 YEARS

SITE LOCATION

LOT 973 RP (PART) IN D.D. 107, FUNG KAT HEUNG, KAM TIN, YUEN LONG, NEW TERRITORIES

SCALE

1 : 300 @ A4

DRAWN BY OL DATE 16.1.2023

REVISED BY LT DATE 3.5.2024

APPROVED BY DATE

DWG. TITLE

FSI PROPOSAL

DWG NO. APPENDIX II VER. 001